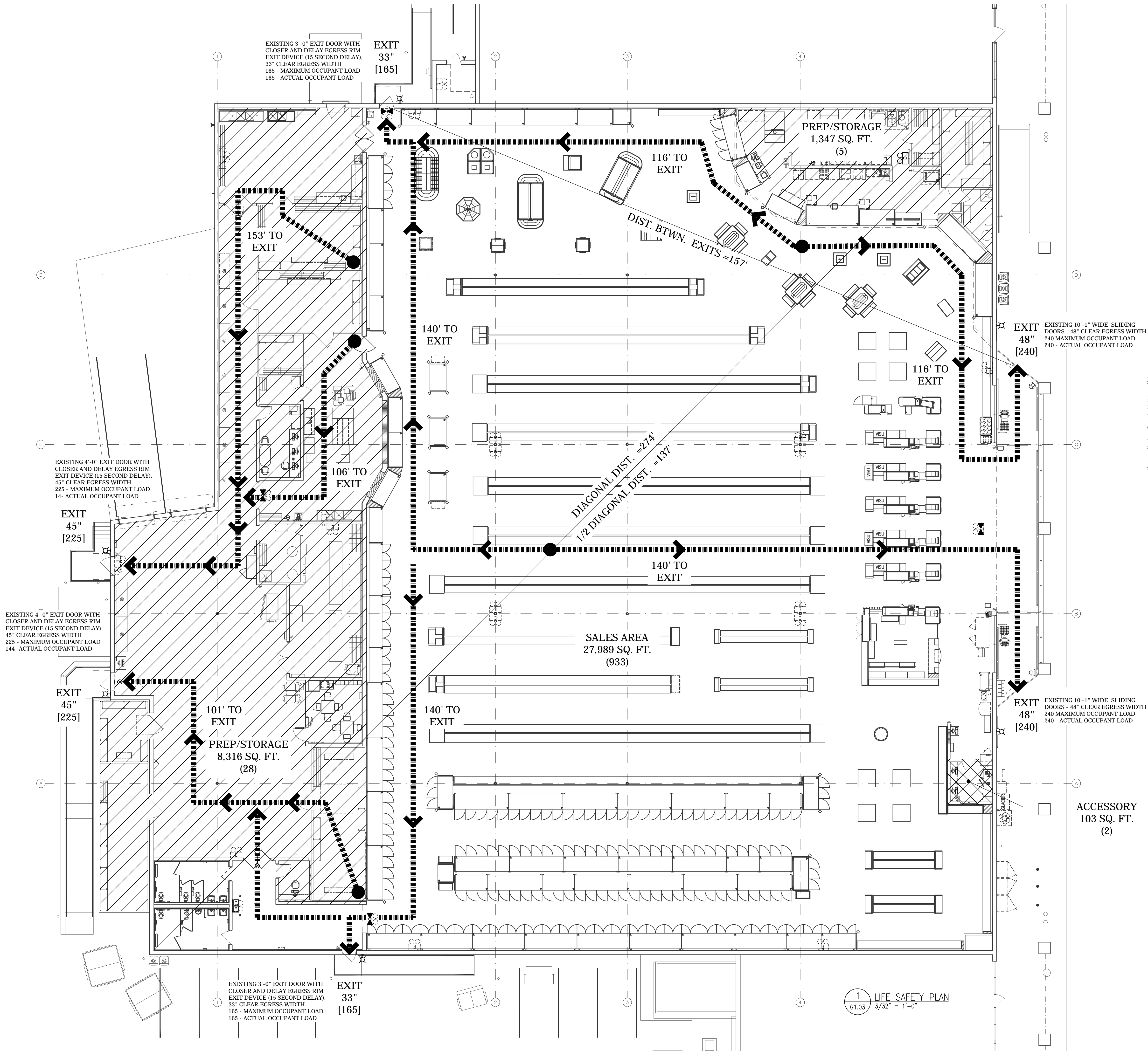


Thursday, September 19, 2019 10:22:59 AM E:\2019\19018.03\Food Lion Store 1458\Laurel EA\Design\Construction Set\1458 G1.03.00.dwg



OCCUPANT LOAD			
PER TABLE 1004.1.1, 2012 IBC			
OCCUPANT TYPE	GROSS AREA	SF/PERSON	ALLOWABLE LOAD
PREP/STORAGE	9,663 SF	300	33 OCCUPANTS
ACCESSORY (OFFICE USE)	108 SF	100	2 OCCUPANTS
SALES AREA	27,989 SF	30	933 OCCUPANTS
TOTAL	37,760 SF		968 OCCUPANTS

LEGEND	
	PREP/STORAGE (AREA) (OCC. LOAD)
	ACCESSORY (AREA) (OCC. LOAD)
	ASSEMBLY (AREA) (OCC. LOAD)
	SALES AREAS (AREA) (OCC. LOAD)
	EGRESS ROUTE
	MOST REMOTE POINT
	EXIT LIGHTS
	EMERGENCY LIGHTS
	EXIT LIGHT W/ EMERGENCY LIGHTS
	EXIT
	EXIT DOOR CLEAR WIDTH
	DOOR MAX. OCC. LOAD

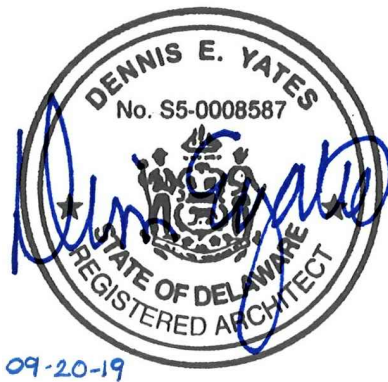
EGRESS	
PER 2012 IBC	
CLEAR WIDTH	
PROVIDED	48"
REQUIRED	.2" x OCCUPANT
	968 OCCUPANTS
	8' 2"
	45"
	45"
	33"
	33"
TOTAL	252"
	193.6"
EXITS	
PROVIDED	6
REQUIRED	3
TRAVEL DISTANCE	
MAX	250'
ACTUAL	153'
EXIT SEPARATION	
PROVIDED MIN	157'
REQUIRED MIN	DIAGONAL 274'/2
	137'

- LIFE SAFETY GENERAL NOTES:
- MERCANTILE OFFICE ALTERATION DESIGNED UNDER 2012 INTERNATIONAL BUILDING CODE.
  - THIS BUILDING IS TYPE II-B CONSTRUCTION, MERCANTILE OCCUPANCY, SPRINKLERED.
  - MAXIMUM ALLOWABLE EXIT ACCESS DISTANCE = 250' (MERCANTILE)
  - MAXIMUM ALLOWABLE COMMON PATH OF TRAVEL DISTANCE = 75'
  - MAXIMUM ALLOWABLE DEAD END TRAVEL DISTANCE IN CORRIDORS = 20'
  - CLEAR OPENING WIDTH FOR A SINGLE 36" WIDE DOOR SHOULD BE CONSIDERED 33" TO COMPENSATE FOR STOP, DOOR THICKNESS AND HINGE THROW.
  - SEE SHEET A1.03 GENERAL NOTE #10 FOR FIRE EXTINGUISHER REQUIREMENTS.
  - FIRE EXTINGUISHER SIGNS FOR FLAT WALL SURFACES - PROVIDE 18" H X 4" W GLOW-IN-THE-DARK PLASTIC SIGN EQUAL TO ACCUFORM SIGNS MFXG551GP (GRAINGER ITEM #8FZW0).
  - FIRE EXTINGUISHER SIGNS FOR CURVED SURFACES (INCLUDING ROUND AND SQUARE COLUMNS) - PROVIDE 18" H X 4" W GLOW-IN-THE-DARK ADHESIVE SIGN EQUAL TO BRADY SV184G (GRAINGER ITEM #32MD69).



Architecture  
Interior Design  
Land Planning  
Project Management

Professional Seals



Interior Alteration For:

**FOOD LION**

2110 Executive Drive, Salisbury, NC 28145 / Ph: 704.633.8250

Store No.

1458

OWNERSHIP OF INSTRUMENTS OF SERVICE:

All reports, specifications, plans, computer files, field data, notes, and other documents and instruments of service shall remain the property of the Design Professional. The Design Professional and owner of common law, statutory and other reserved rights, including the copyright therein.

This drawing is the property of Yates - Chelitzberg - Hughes Architects and is not to be reproduced or copied in whole or any part. It is not to be used on any other project and is to be returned upon request.

© Copyright 2019

Project No.: 1458FLMK20

File Name: 1458 G1.03.00.dwg

Date: 09-20-19

Revisions:

LIFE SAFETY PLAN

Architectural  
**G1.03**

YCH Commission Number

19018.00

7035 Northwinds Dr NW

Concord, NC 28027

704 . 788 . 2000

ycharch.com